



# BANCE

ESTABLISHED 1923



## REMOTE RAIL VOID AND TEMPERATURE MONITOR



### Product Overview:

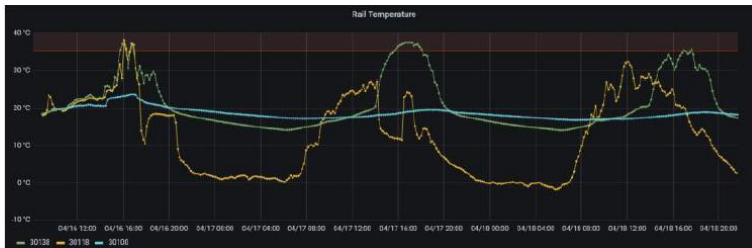
- Linear Displacement Sensor for Remote Track Void Monitoring
- Remote Critical Rail Temperature (CRT) & Ambient Temperature Monitoring
- Real-time reporting and alerts
- Data-logged in device and transmitted over mobile phone network
- User-Definable parameters for alarm thresholds
- Data retrieval via dedicated remote access Web-Server for PC and Smartphone
- Available as Void only, Rail temperature only or combined Void and Rail temperature configuration
- Installation in minutes; device secures to foot of rail Anti-tamper and vibration mounting
- Long life, solar-charging battery – operational for 12+ months continuous
- IP67 Environmental rating
- GPS
- Optional lateral displacement sensor for Track Buckle detection

R BANCE AND CO LTD

Cockcrow Hill House, St. Mary's Road, Surbiton, Surrey KT6 5HE, UK

Tel: +44 (0)20 8398 7141 Fax: +44 (0)20 8398 4765 e-mail: [admin@bance.com](mailto:admin@bance.com) URL: [www.bance.com](http://www.bance.com)

## Example of Void Monitoring Screenshots:



### Specifications:

Measurement of Rail and Ambient Temperature	+/- 0.4°C, -20°C to +70°C Full Range -40°C to +125°C
Sample Rate	10-50Hz
Measuring Range	100mm
Measurement Resolution	0.1mm
Hardware Repeatability	0.01mm
Accuracy	0.1% Full Scale
Communication	2G/4G/LTE
Position	<10m rms Multi GNSS
Power	Rechargeable Internal Li-Ion Cells
Battery Capacity	>24 Months
Battery Life Span	Indefinite with >5 Years
Charging	<14h for Full Charge
Dimensions	440 x 150 x 160mm (LxWxH)
Weight	6.5Kg
Weight While Attaching to Rail	4.7Kg
Enclosure and Base Materials	Aluminium
Solar Panel	Silicon
Data Storage	Data is stored internally until a successful transmission to the storage database is achieved
Rail CLAMP	2 x 10mm Hex. Allen
Anti-Tamper	Optional
Water Proofing	IP67 with IP67 breather
CE	CE Marked

### Notes:

Configurable sample rate with Automatic Temperature Alert Messages  
Configurable Using 100mm Sensor Typical  
Typical (0.1mm)  
Best-Network Embedded SIM  
Multi GNSS  
With Solar Panel

Without solar - Usage and configuration dependent  
With Solar assistance  
Typical  
using supplied charging lead  
Excluding antenna & sensor  
Weight once sensor and foot attached  
Sensor and foot detached while mounting to rail  
Grade 6082

Monocrystalline broadband  
Internally 8Mb of Flash memory is installed, available for long duration logging  
No-tool attachment under development  
Padlock securing

Radio Equipment Directive 2014/53/EU

R BANCE AND CO LTD

Cockcrow Hill House, St. Mary's Road, Surbiton, Surrey KT6 5HE, UK

Tel: +44 (0)20 8398 7141 Fax: +44 (0)20 8398 4765 e-mail: admin@bance.com URL: www.bance.com