

BANCE



ALUMICART – PETROL

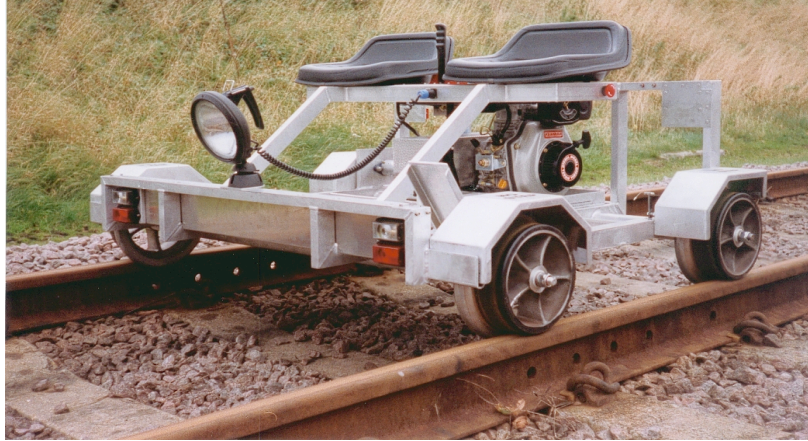
MODEL 2NPAC – 2 SEAT VEHICLE

MODEL 4NPAC – 4 SEAT VEHICLE



- Petrol engine motorised track trolley
- 2-seat and 4-seat options
- Lightweight
- Track inspections
- Trailer towing
- Hauling equipment and materials
- Personnel movement
- Engineering applications: de-icing, weed-killing, cable laying, rail welding etc.
- Bespoke designs

BANCE - PETROL ALUMICART



Gauge:	Standard 1435mm (other gauges available)
Frame:	Welded rectangular tube – aluminium.
Seats:	Seats with back support and drain holes. Seat belt fixing points. Seat belts optional.
Wheels:	Aluminium, or aluminium with 10mm moulded rubber tyres.
Axles:	Through axles high grade steel on sealed ball races.
Engine:	Standard: 4HP Briggs and Stratton Petrol Engine.
Foot Pedal:	Emergency and parking brake activator pedal which acts as a fail-safe brake when released. Fully depressed before moving off, it increases revs to max from idle. Vehicle will not travel until pedal is depressed.
Alternator:	24V 30A provides power for lighting up to 500 watts, and charge for sealed lead acid battery.
Battery:	24V Rechargeable sealed lead acid, providing up to 1 hour lighting to 50w, when engine not running to enable refuelling or vehicle inspection.
Brakes:	Full braking is achieved through the hydrostatic drive from the engine via the joystick. Parking brake – fail safe spring activated drum brakes providing 4 wheel braking. Brakes released when foot pedal is depressed. These brakes also act as emergency brakes in the event of engine failure or dead man release. Emergency towing brake – Emergency latching push button applies brakes on all attached Bance trailers. All trailer brakes automatically applied when ignition is switched off.
Lights:	Automatically changing red/white directional marker lights. Hand held 55 watt Halogen spotlight fitted for quick release. 2 x 70 watt floodlights (one over each rail).
Horn:	Single tone electric.
Speed:	Standard: 20 Km/h (30 Km/h optional)

Specifications

	2NPAC	4NPAC
Length (mm):	1250	1980
Width (mm):	1650	1650
Height (mm):	900	900
Weight (Kg)	140	155
Carrying Capacity (Kg):	300	550
<u>Towing:</u>		
Max load for std speed machine	Kg	Kg
< 1:100 gradient	2000 (UK 1000Kg)	2000 (UK 1000Kg)
> 1:100 < 1:50	1000	1000
> 1:50	500	500

Special tow bars providing electrics to brakes and lighting on trailer

