

BANCE



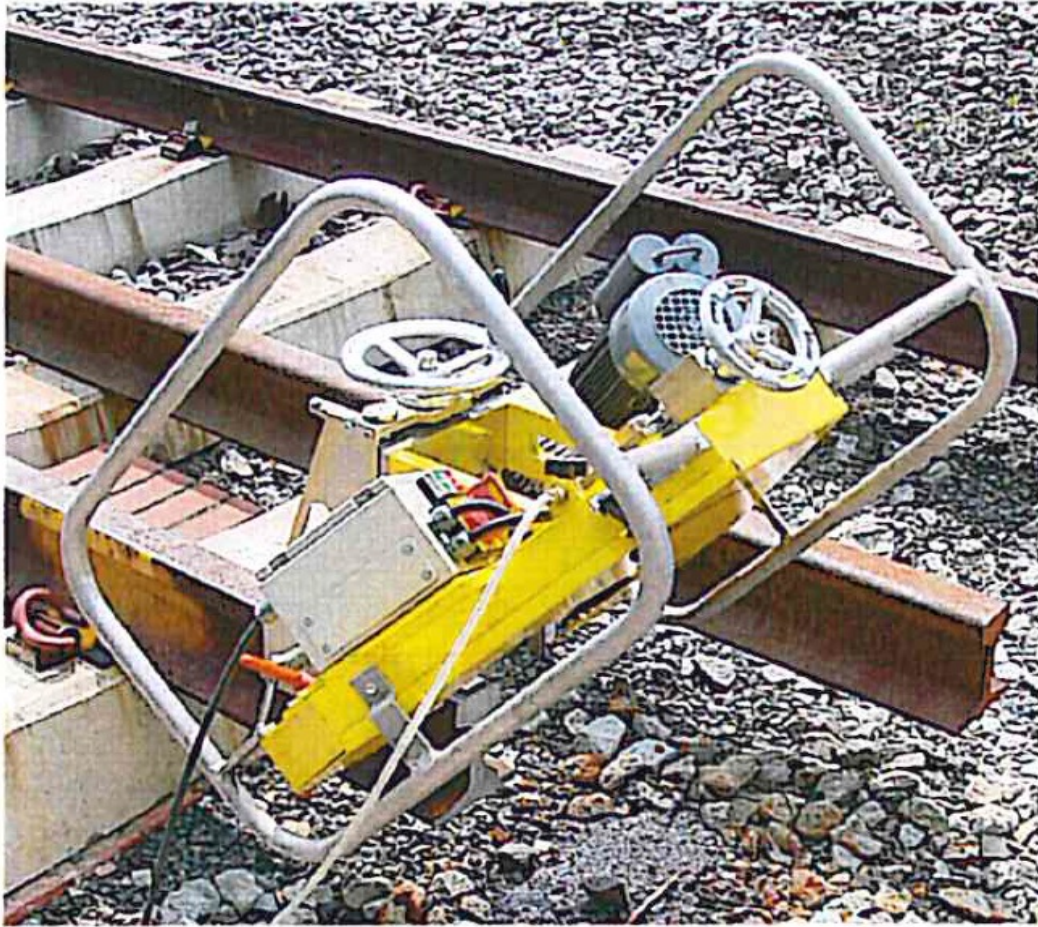
RAIL BAND SAW



- Electrically operated 110v/240v
- High precision cuts quickly
- Reduces preparatory work prior to welding saving 40-50 minutes per weld
- Suitable for operation in metros (as used by London Underground)
- Average 20 cuts per blade
- Easy to operate and handle
- Environmentally friendly: no emissions, low noise, low vibration
- Low cutting costs
- Fast and precise

BANCE

RAIL BAND SAW



TECHNICAL SPECIFICATION

Width: 630mm

Length: 640mm

Height: 558mm

Weight of Clamp: 19Kg

Weight of Frame: 37Kg

Cutting Capacity: 150mm x 180mm

Blade Type: Bi-band RIX-Astroflex

Blade Tothing: 4/5 CHIP-Splitter

Speed: 40m per minute

Blade Tension: 35-40 bar

Coolant Tank: 1 litre

Motor: 110v / 240v