

BANCE



RAIL BOND CLAMPS



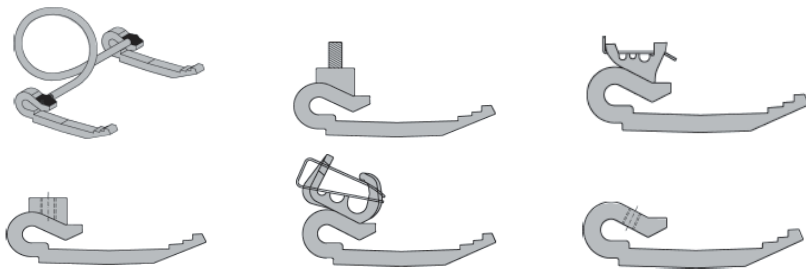
- For multi-purpose electrical connection including permanent and temporary bonding for signaling, return current, earthing and blocking lines
- Manufactured sizes to fit all rail profiles
- Screwless positive connection – no loose connections
- Minimal electrical resistance
- Installation and removal in seconds – tap on fitting
- Fast and effective in an emergency
- Lightweight and low cost

BANCE

BANCE - RAIL BOND CLAMPS

FOR MULTI-PURPOSE ELECTRICAL CONNECTION,
INCLUDING PERMANENT & TEMPORARY BONDING FOR:

- SIGNALLING
- RETURN CURRENT
- EARTHING
- BLOCKING LINES
- MANUFACTURED SIZES TO FIT ALL RAIL PROFILES
- VARIOUS CABLE CONNECTION OPTIONS – NO LOOSE CABLES
- MINIMAL ELECTRICAL RESISTENCE
- INSTALLATION AND REMOVAL IN SECONDS - TAP ON FITTING
- FAST AND EFFECTIVE IN AN EMERGENCY
- LIGHTWEIGHT AND LOW COST



Connecting Type
E2 & E3



Electrical rail contact with
vibration-resistant cable fixing for
return current grounding, signal
circuits etc.



Connecting Type
E4



Electrical rail contacts with
vibration-resistant cable fixing.
Typical arrangement with two
clamps and 240mm² cable. Ideal
for networks with heavy return
currents.



Connecting Type
GI12



Electrical rail contact tapped for
vibration-resistant M12 screw
fixing and cable lug, for return
currents, mast grounding, signal
circuits etc.



Connecting Type
EA10



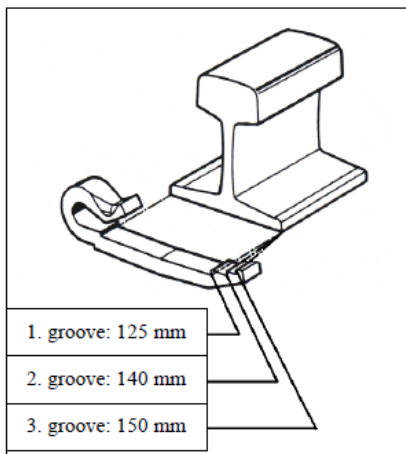
Electrical rail contact with reusable
and vibration-proof M10 nut and
cable lug for return currents, mast
grounding, signal circuits etc.
Advantages: Fast and easy cable
fitting, larger contact area.

BANCE

BANCE - RAIL BOND CLAMPS

Connecting Types of Contact Clamps and Part numbers:

Clamps for most European railways are given the type 'C' prefix



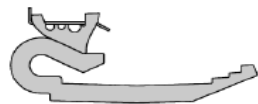
Basic type C (C23)

Suitable for the following rails:

- 1. groove: S49*=Form B, S49a*, S54, SBB I, DSB 45, UIC54E = SBB IV = Form C
- 2. groove: UIC54 = SBB III = 54kg, 98 lb, 109 lb, 110 A, 113 A, 113 lb, U36, U50, EB50T, Ri35G=35GP
- 3. groove: UIC60 = SBB VI = UNI60, Ri 55, Ri53

According to customer's requirements Bance contact clamps will be either delivered with heads and springs for clamping cables and wires directly (connecting types E2, E3, E4 & E5). Or they are delivered with tapped threads or studs for cable fastenings by means of cable lugs (connecting types GI, EA, EI). For example, a European type GI Clamp with a M12 thread would be code: C/GI12

For clamping



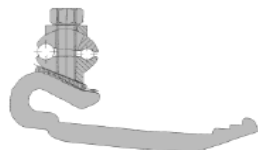
Type E2
with 4
grooves (3/
6/7/10 mm)



Type E3
with 4
grooves (3/
5/8/10 mm)

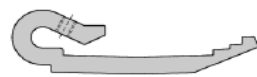


Type E4
with 4
grooves
(5/10/16/21 mm)



Type E5
with 2
variable
grooves

For screwing



Typ GI
With tapped
thread*



Typ EA
with stud*



Type EI
With tapped
thread*

* Thread dimension according to customer's requirements